

Section 2

Non-Threaded Fasteners, Etc.

SHAFT COLLARS # 705 A



Two materials: Steel 95 Min Pb28 (AISI 12L13)
or A1 = 303 Stainless Steel - Nom. Diameter (I.D.) Tolerance H8
Nom. Diameters up to 22 mm w/ Slotted Set Screws # 553
Nom. Diameters over 22 mm w/ Socket Set Screws # 914

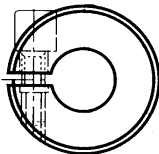
NOM. DIA. mm	SET SCREW # 553	O.D. mm	WIDTH mm	# 705 A STEEL	# 705 A-A1 STAINLESS	NOM. DIA. mm	SET SCREW # 914	O.D. mm	WIDTH	HEX KEY SIZE	# 705 A STEEL	
2	M 2 x 3	6	3.5	x	-	24	M 8 x 10	40	16	4	x	x
2.5	M 2 x 3	7	4	x	-	25	M 8 x 10	40	16	4	x	x
3	M 2 x 3	7	5	x	-	28	M 8 x 12	45	16	4	x	-
4	M 2.6 x 4	8	5	x	-	30	M 8 x 12	45	16	4	x	x
5	M 3 x 4	10	6	x	x	32	M 8 x 12	50	16	4	x	x
6	M 4 x 5	12	8	x	x	34	M 8 x 12	50	16	4	x	-
8	M 4 x 6	16	8	x	x	35	M 8 x 12	56	16	4	x	x
10	M 5 x 8	20	10	x	x	36	M 8 x 12	56	16	4	x	x
12	M 6 x 8	22	12	x	x	38	M 8 x 12	56	16	4	x	-
14	M 6 x 8	25	12	x	x	40	M 10 x 15	63	18	5	x	x
15	M 6 x 8	25	12	x	x	45	M 10 x 15	70	18	5	x	-
16	M 6 x 8	28	12	x	x	50	M 10 x 15	80	18	5	x	-
18	M 6 x 8	32	14	x	x	55	M 10 x 15	80	18	5	x	-
20	M 6 x 8	32	14	x	x	60	M 10 x 15	90	18	5	x	-
22	M 6 x 10	36	14	x	x	70	M 10 x 15	100	20	5	x	-

"x" denotes stock availability

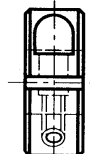
SPLIT SHAFT COLLARS # 705 SC

SPLIT SHAFT COLLARS # 705 SD

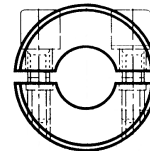
705 SC = One piece clamp - Material = Steel - Complete with socket head cap screws # 912
705 SD = Two piece clamp - Material = Steel - Complete with socket head cap screws # 912



705 SC



705 SD



I.D. H7	SCREW SIZE	O.D.	WIDTH	# 705 SC	# 705 SD	I.D. H7	SCREW SIZE	O.D.	WIDTH	# 705 SC	# 705 SD
5	M 3 x 8	17	9	x	x	18	M 5 x 16	38	13	x	x
6	M 3 x 8	17	9	x	x	20	M 6 x 16	40	15	x	x
8	M 3 x 8	19	9	x	x	25	M 6 x 16	45	15	x	x
9	M 4 x 12	25	10	x	x	30	M 6 x 16	50	15	x	x
10	M 4 x 12	25	10	x	x	35	M 6 x 16	55	15	x	x
12	M 4 x 12	28	10	x	x	40	M 8 x 25	60	15	x	x
14	M 5 x 16	33	13	x	x	45	M 8 x 25	75	19	x	x
15	M 5 x 16	33	13	x	x	50	M 8 x 25	80	19	x	x
16	M 5 x 16	33	13	x	x	55	M 8 x 25	85	19	x	x

"x" denotes stock availability

How to Order
Item #: 705 A-A1
Size: 16
Quantity: 4
Tel: 1-888-966-MMCC