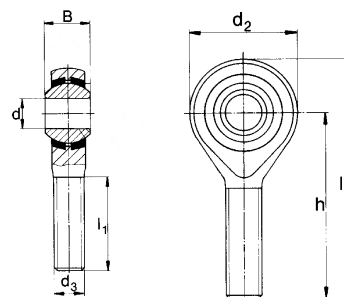


### ARTICULATED ROD ENDS # 648 SERIES K NEW ITEM

#### MALE THREAD

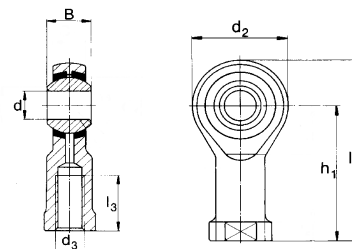
Rod End Housing: Forged Steel, Tempered, Rolled Thread, Surface Galvanized  
 Joint Ball: Ball Bearing Steel, Hardened and Ground, Surface Superfinished and Chromium Plated  
 Race: Nylon/Teflon/Glass Compound



THREAD d3	BORE d	HOW TO ORDER		DIMENSIONS				
		THREAD		B	d2	h	l1	l2
		RIGHT HAND	LEFT HAND					
M 5 x .8	5	<b>K5MR</b>	<b>K5ML</b>	8	18	33	19	42
M 6 x 1	6	<b>K6MR</b>	<b>K6ML</b>	9	20	36	21	46
M 8 x 1.25	8	<b>K8MR</b>	<b>K8ML</b>	12	24	42	25	54
M10 x 1.5	10	<b>K10MR</b>	<b>K10ML</b>	14	28	48	28	62
M 12 x 1.75	12	<b>K12MR</b>	<b>K12ML</b>	16	32	54	32	70
M 14 x 2	14	<b>K14MR</b>	<b>K14ML</b>	19	36	60	36	78
M 16 x 2	16	<b>K16MR</b>	<b>K16ML</b>	21	42	66	37	87
M 18 x 1.5	18	<b>K18MR</b>	<b>K18ML</b>	23	46	72	41	95
M 20 x 1.5	20	<b>K20MR</b>	<b>K20ML</b>	25	50	78	45	103
M 22 x 1.5	22	<b>K22MR</b>	<b>K22ML</b>	28	54	84	48	111
M 24 x 2	24	<b>K25MR</b>	<b>K25ML</b>	31	60	94	55	124
M 30 x 2	30	<b>K30MR</b>	<b>K30ML</b>	37	70	110	66	145

#### FEMALE THREAD

Rod End Housing: Forged Steel, Tempered, Surface Galvanized  
 Joint Ball: Ball Bearing Steel, Hardened and Ground, Surface Superfinished and Chromium Plated  
 Race: Nylon/Teflon/Glass Compound



THREAD d3	BORE d	HOW TO ORDER		DIMENSIONS				
		THREAD		B	d2	h	l1	l2
		RIGHT	LEFT HAND					
M 5 x .8	5	<b>K5FR</b>	<b>K5FL</b>	8	18	27	10	36
M 6 x 1	6	<b>K6FR</b>	<b>K6FL</b>	9	20	30	12	40
M 8 x 1.25	8	<b>K8FR</b>	<b>K8FL</b>	12	24	36	16	48
M 10 x 1.5	10	<b>K10FR</b>	<b>K10FL</b>	14	28	43	20	57
M 12 x 1.75	12	<b>K12FR</b>	<b>K12FL</b>	16	32	50	22	66
M 14 x 2	14	<b>K14FR</b>	<b>K14FL</b>	19	36	57	25	75
M 16 x 2	16	<b>K16FR</b>	<b>K16FL</b>	21	42	64	28	85
M 18 x 1.5	18	<b>K18FR</b>	<b>K18FL</b>	23	46	71	32	94
M 20 x 1.5	20	<b>K20FR</b>	<b>K20FL</b>	25	50	77	33	102
M 22 x 1.5	22	<b>K22FR</b>	<b>K22FL</b>	28	54	84	37	111
M 24 x 2	24	<b>K25FR</b>	<b>K25FL</b>	31	60	94	42	124
M 30 x 2	30	<b>K30FR</b>	<b>K30FL</b>	37	70	110	51	145

**How to Order**  
 Item #: 648 Series K  
 Size: K16FR  
 Quantity: 10  
 Tel: 1-888-966-MMCC

Size call out example: K16FR = Series Letter(K) + Thread Diameter(16) + Male/Female(F) + Right/Left(R)