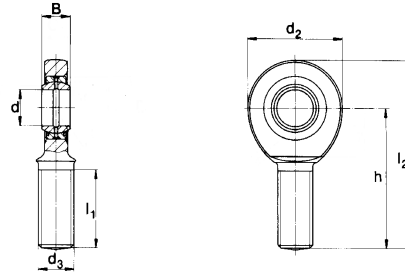


ARTICULATED ROD ENDS # 648 SERIES E NEW ITEM

MALE THREAD

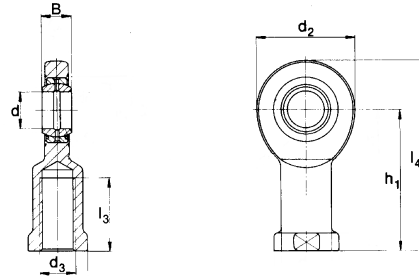
Rod End Housing: Forged Steel, Tempered, Rolled Thread, Surface Galvanized
 Joint Ball: Ball Bearing Steel, Hardened and Ground, Surface Superfinished and Chromium Plated
 Race: Nylon/Teflon/Glass Compound



THREAD d3	BORE d	HOW TO ORDER		DIMENSIONS				
		THREAD		B	d2	h	l1	l2
		RIGHT HAND	LEFT HAND					
M 6 x 1	6	E6MR	E6ML	6	21	36	18	46.5
M 8 x 1.25	8	E8MR	E8ML	8	24	42	22	54
M 10 x 1.5	10	E10MR	E10ML	9	29	48	26	62.5
M 12 x 1.75	12	E12MR	E12ML	10	34	54	28	71
M 14 x 2	14	E14MR	E14ML	12	40	63	34	83
M 16 x 2	16	E16MR	E16ML	14	46	69	36	92
M 20 x 1.5	20	E20MR	E20ML	16	53	78	43	104.5
M 24 x 2	24	E25MR	E25ML	20	64	94	53	126
M 30 x 2	30	E30MR	E30ML	22	73	110	65	146.5

FEMALE THREAD

Rod End Housing: Forged Steel, Tempered, Rolled Thread, Surface Galvanized
 Joint Ball: Ball Bearing Steel, Hardened and Ground, Surface Superfinished and Chromium Plated
 Race: Nylon/Teflon/Glass Compound



THREAD d3	BORE d	HOW TO ORDER		DIMENSIONS				
		THREAD		B	d2	h1	l3	l4
		RIGHT HAND	LEFT HAND					
M 6 x 1	6	E6FR	E6FL	6	21	30	11	40.5
M 8 x 1.25	8	E8FR	E8FL	8	24	36	15	48
M 10 x 1.5	10	E10FR	E10FL	9	29	43	20	57.5
M 12 x 1.75	12	E12FR	E12FL	10	34	50	23	67
M 14 x 2	14	E14FR	E14FL	12	40	61	30	81
M 16 x 2	16	E16FR	E16FL	14	46	67	34	90
M 20 x 1.5	20	E20FR	E20FL	16	53	77	40	103.5
M 24 x 2	24	E25FR	E25FL	20	64	94	48	126
M 30 x 2	30	E30FR	E30FL	22	73	110	56	146.5

How to Order
 Item #: 648 Series E
 Size: E10MR
 Quantity: 10
 Tel: 1-888-966-MMCC

Size call out example: E10MR = Series Letter(E) + Thread Diameter(10) + Male/Female(M) + Right/Left(R)
 Sizes up to 80 mm available - **Please inquire.**