

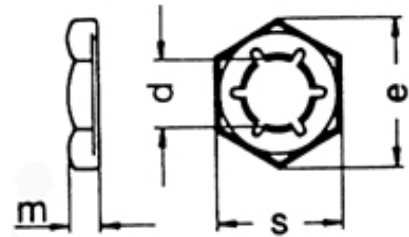
SELF-LOCKING PAL TYPE NUTS # 7967

Spring Steel HRC 38 - 42 - Self-Locking Counter Nut - "Pal Nut"

NOMINAL SIZE THREAD DIA. d	DATA mm			
	Across Flats s	Height m	Material Thickness	Across Corners e
M 4 x .7	7	2.5	0.3	8.1
M 5 x .8	8	2.5	0.4	9.2
M 6 x 1	10	3	0.4	11.5
M 8 x 1.25	13	3.5	0.5	15
M 10 x 1.5	17	4	0.5	19.6
M 12 x 1.75	19	4.5	0.6	21.9
M 14 x 2	22	5	0.6	25.4
M 16 x 2	24	5	0.7	27.7
M 18 x 2.5	27	5.5	0.7	31.2
M 20 x 2.5	30	6	0.8	34.6
M 22 x 2.5	32	6	0.8	36.9
M 24 x 3	36	7	0.9	41.6
M 27 x 3	41	7	1.0	47.3
M 30 x 3.5	46	8	1.1	53.1

Tightening: Screw on hand-tight and then give final tightening of 1/4 to 1/2 turn by spanner.

Loosening: First tighten the hex nut hard and then release the self locking counter nut.

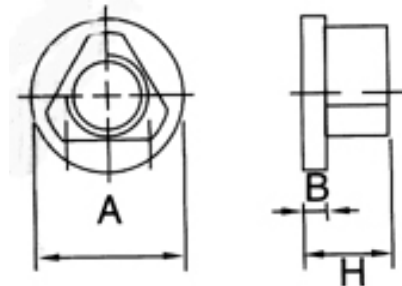


SAFETY TRIANGLE NUTS # 22425

Steel Zinc Plated - Property Class 5

NOM. SIZE THREAD DIA.	DATA mm			# 22417 Wrench Size
	O.D. a	Flange Height b	Overall Height h	
M 4 x .7	8.5	2	5	4
M 5 x .8	10	2	6	5
M 6 x 1	12	2	6.5	6
M 8 x 1.25	15	2.3	8.3	8
M 10 x 1.5	18	2.8	10.3	10
M 12 x 1.75	28	3.5	15	12

*Please note: Manufacturers minimum ordering quantities may apply - **Please inquire.**



How to Order

Item #: 7967
Size: M 14 x 2
Quantity: 200
Tel: 1-888-966-MMCC