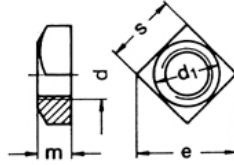


Section 1 Threaded Fasteners

SQUARE NUTS # 557

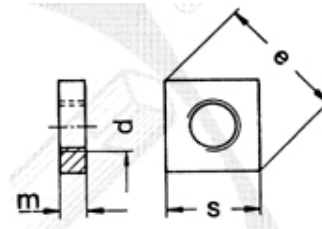
Steel Class 5 - Zinc Plated



NOMINAL DIA.	5 x .8	6 x 1	8 x 1.25	10 x 1.5	12 x 1.75
HEIGHT max.	4	5	6.5	8	10
ACROSS FLATS S	8	10	13	16/17	18/19
ACROSS POINTS E	13.0	14.1	18.4	24	26.9

LOW SQUARE NUTS # 562

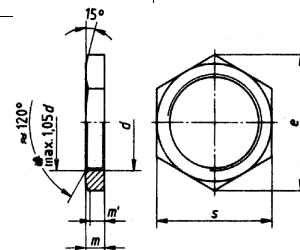
Property Class 04 - Zinc Plated



NOMINAL DIAMETER	M 3 x .5	M 4 x .7	M 5 x .8	M 6 x 1	M 8 x 1.25	M 10 x 1.5
HEIGHT max.	1.8	2.2	2.7	3.2	4	5
ACROSS FLATS S	5.5	7	8	10	13	16/17
ACROSS POINTS E	7	8.9	10.2			24

THIN CONDUIT PANEL NUTS # 80705

Material: 14 H Steel - Zinc Plated



THREAD SIZE	HEIGHT	ACROSS FLATS	AVAILABILITY
12 x 1.5	6	17	x
14 x 1.5	6	19	x
16 x 1	6	22	x
16 x 1.5	6	22	x
18 x 1.5	6	24	x
20 x 1.5	6	27	x
22 x 1.5	7	30	x
24 x 1.5	7	32	x
26 x 1.5	8	36	x
30 x 2	8	41	x
36 x 2	9	46	x
42 x 2	9	50	x
45 x 2	9	55	x

"x" denotes stock availability

*Please note: Conduit thread sizes PG7, PG9, PG11, PG13.5, PG16, PG21, PG29 & PG36 available on request - **Please inquire**

How to Order
 Item #: 557
 Size: 12 x 1.75
 Quantity: 100
 Tel: 1-888-966-MMCC