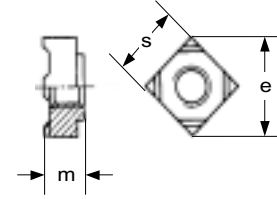


Section 1 Threaded Fasteners

SQUARE WELD NUTS # 928

Ref: DIN 928

Two Materials: Steel - Plain Finish with maximum carbon content of 0.25%
A2 (304) Stainless Steel



THREAD SIZE	DIMENSIONS				MATING PLATE		PROOF LOAD	# 928 Steel	# 928 A2 304 Stainless Steel
	Across Corners e	Tab Height ±0.1	Overall Height h14 m	Across Flats/ Wrench Size h14 s	min.	max.			
M 4 x .7	9	0.6	3.5	7	0.75	3	6,800	x	x
M 5 x .8	12	0.8	4.2	9	0.88	3.5	11,000	x	x
M 6 x 1	13	0.8	5	10	0.88	4	15,500	x	x
M 8 x 1.25	18	1	6.5	14	1	4.5	22,300	x	x
M 10 x 1.5	22	1.2	8	17	1.25	5	44,800	x	x
M 12 x 1.75	25	1.4	9.5	19	1.5	5	65,300	x	-
M 14 x 2	28	1.4	11	22	2	6	89,700	x	-
M 16 x 2	32	1.6	13	24	2	6	123,000	x	-

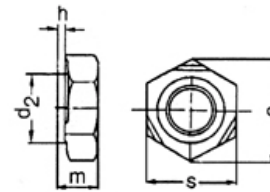
"x" denotes stock availability

HEXAGON WELD NUTS # 929

Ref: DIN 929

Two Materials:

Steel - Plain Finish with maximum carbon content of 0.25%
A2 (304) Stainless Steel

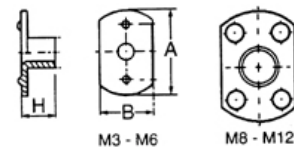


THREAD SIZE	DATA mm					MATING PLATE THICKNESS		# 929 Steel Class 6/8	# 929 A2 304 Stainless Steel
	Across Flats/ Wrench Size s	Overall Height m	Flange Dia. d2	Tab Height h	PROOF LOAD	min.	max.		
M 3 x 0.5	7.5	3	4.5	0.55	3,800	0.63	2.5	x	x
M 4 x 0.7	9	3.5	6	0.65	6,800	0.75	3	x	x
M 5 x 0.8	10	4	7	0.7	11,000	0.88	3.5	x	x
M 6 x 1	11	5	8	0.75	15,500	0.88	4	x	x
M 8 x 1.25	14	6.5	10.5	0.9	28,300	1	4.5	x	x
M 10 x 1.5	17	8	12.5	1.15	44,800	1.25	5	x	x
M 12 x 1.75	19	10	14.8	1.4	65,300	1.5	5	x	x
M 14 x 2	22	11	16.8	1.8	89,700	2	6	x	-
M 16 x 2	24	13	18.8	1.8	123,000	2	6	x	-

"x" denotes stock availability

TAB WELD NUTS # 929 T

NOM. DIA.	M 3x .5	M 4x.7	M 5x.8	M 6x1	M 8x1.25	M 10x1.5	M12x1.75
Tab Base mm (a x b)	17 x 9	17 x 9	19 x 11	22 x 13.5	26 x 18	26 x 18	28 x 19
Overall Height mm h	6	6	7	8.5	10	12	12.5



How to Order

Item #: 928

Size: 6 x 1

Quantity: 400

Tel: 1-888-966-MMCC

**Please note: For mechanical properties & tolerance information, please refer to Useful Information, Section 10.