

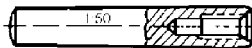
Section 1

Threaded Fasteners



INTERNALLY THREADED TAPER PINS # 7978

Ref: DIN 7978/ISO 8736 - Internal Thread - 1:50 (2%) Taper
 Material: Free Cutting Steel 9SMnPb28 - # 10718 (Similar to AISI # 12L13)



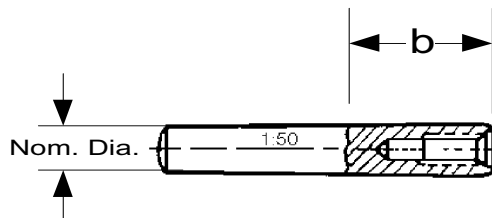
NOMINAL SIZE	AVAILABILITY
6 x 16	X
6 x 20	X
6 x 24	X
6 x 26	X
6 x 28	X
6 x 30	X
6 x 32	X
6 x 36	X
6 x 40	X
6 x 45	X
6 x 50	X
6 x 60	X
8 x 20	X
8 x 24	X
8 x 26	X
8 x 28	X
8 x 30	X
8 x 32	X
8 x 36	X
8 x 40	X
8 x 45	X
8 x 50	X
8 x 60	X
8 x 70	X
8 x 80	X

NOMINAL SIZE	AVAILABILITY
10 x 24	X
10 x 28	X
10 x 30	X
10 x 32	X
10 x 36	X
10 x 40	X
10 x 45	X
10 x 50	X
10 x 60	X
10 x 70	X
10 x 80	X
10 x 90	X
10 x 100	X
12 x 32	X
12 x 36	X
12 x 40	X
12 x 50	X
12 x 55	X
12 x 60	X
12 x 70	X
12 x 80	X
12 x 90	X
12 x 100	X
12 x 120	X

NOMINAL SIZE	AVAILABILITY
16 x 40	X
16 x 45	X
16 x 50	X
16 x 55	X
16 x 60	X
16 x 70	X
16 x 80	X
16 x 90	X
16 x 100	X
16 x 120	X
20 x 50	X
20 x 60	X
20 x 70	X
20 x 80	X
20 x 90	X
20 x 100	X
20 x 120	X

"X" denotes stock availability

*Please note: For nominal diameters 14 mm, 25 mm, 30 mm, 40 mm & 50 mm - Please inquire.



NOM. DIAMETER	6	8	10	12	14	16	20	25	30	40	50
THREAD DIAMETER	M 4 x .7	M 5 x .8	M 6 x 1	M 8 x 1.25	M 8 x 1.25	M 10 x 1.5	M 12 x 1.75	M 16 x 2	M 20 x 2.5	M 20 x 2.5	M 24 x 3
b THREAD DEPTH	6	8	10	12	12	16	18	24	30	30	36
INTERNAL CHAMFER	0.8	1	1.2	1.6	1.6	2	2.5	3	4	5	6.3
Tolerance h10	-0.048	-0.058			-0.070			-0.084			-1.100

How to Order
 Item #: 7978
 Size: 6 x 50
 Quantity: 100
 Tel: 1-888-966-MMCC

**Please note: Nominal Diameter indicates diameter at smaller tapered pin end. See page 1-125, # 7977 for material and chemical composition.